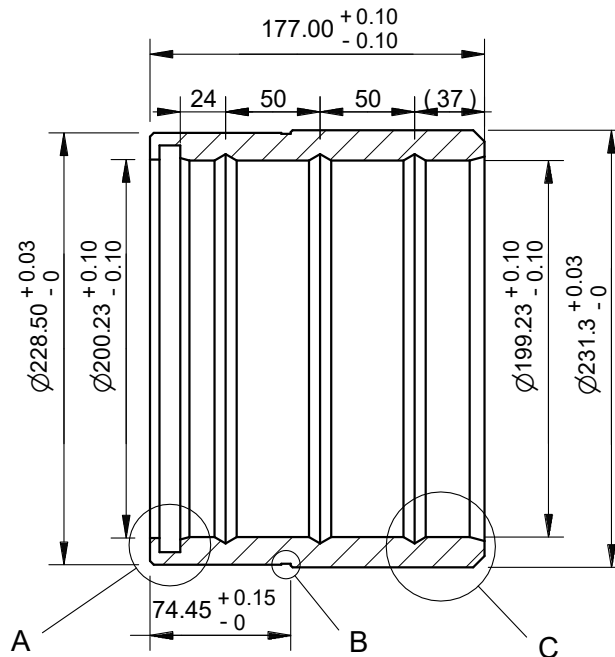
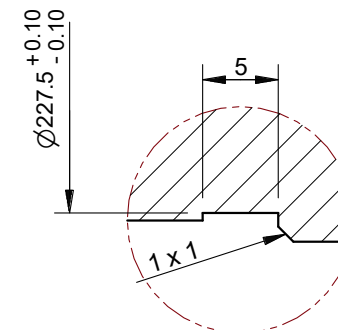


SCALE 1:4

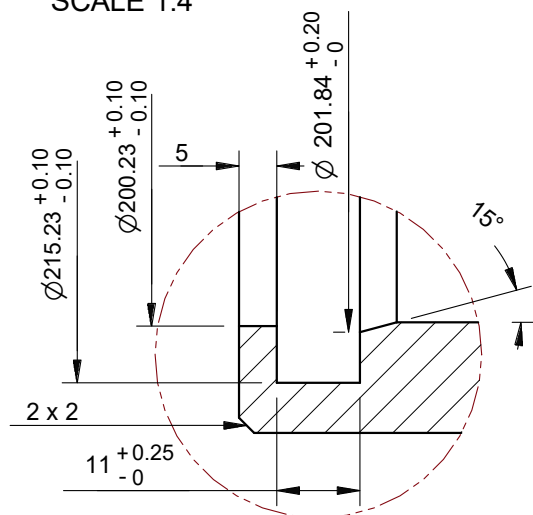


Section A-A

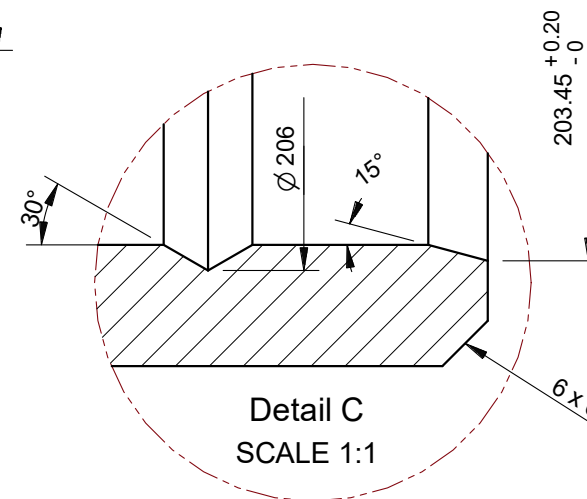
SCALE 1:4



Detail B
SCALE 2:1



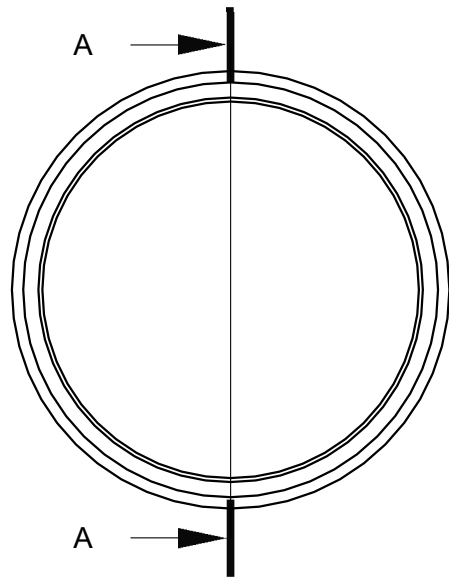
Detail A
SCALE 1:1



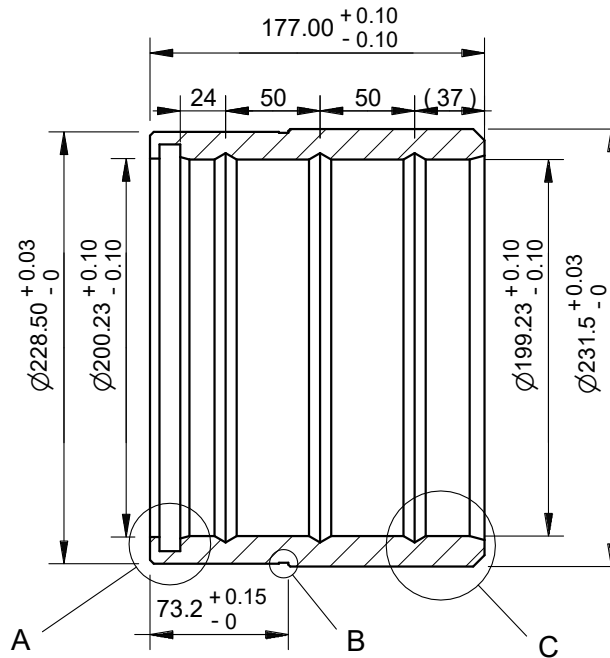
Detail C
SCALE 1:1

1. All dimensions in mm
2. Internal corners 0.4 radius and all edges broken
3. To suit bore $\phi 228.30^{+0.05}_0$, 74.65 \pm 0.2 from back face; rest of bore relieved to $\phi 231.10^{+0.05}_0$

Track Adjuster Sleeve Modified Land Custom 1			Revision	1.000
Part NO.	Drawn by	Date	Updated	
9241889RM - EX5500	David	24/03/2025		
DWG NO.			Scale	
JOB NO.			Sheet	
H14880			1 OF 2	

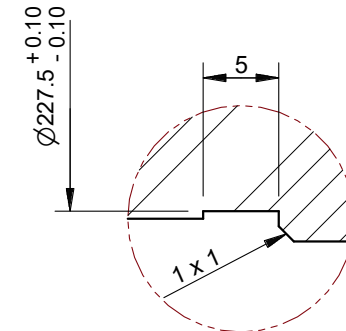


SCALE 1:4

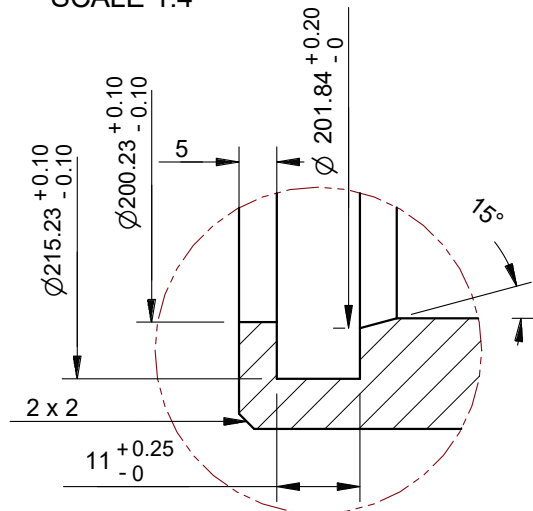


Section A-A

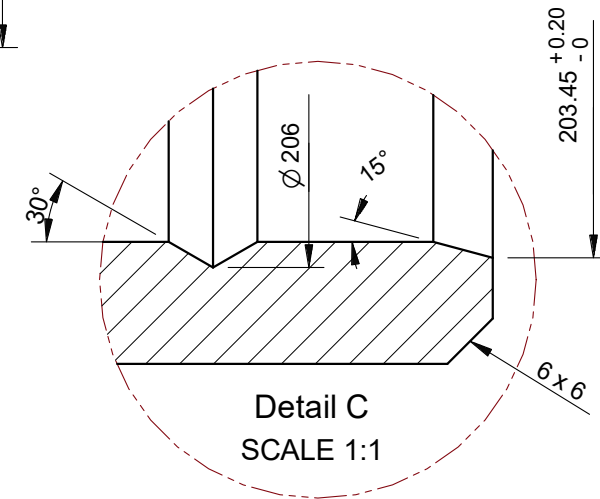
SCALE 1:4



Detail B
SCALE 2:1



Detail A
SCALE 1:1



Detail C
SCALE 1:1

1. All dimensions in mm
2. Internal corners 0.4 radius and all edges broken
3. To suit bore $\varnothing 231.30 \pm 0.05$, 73.4 ± 0.2 from back face; rest of bore relieved to $\varnothing 231.30 \pm 0.05$

Track Adjuster Sleeve Modified Land Custom 2			Revision	1.000
Part NO.	Drawn by	Date	Updated	
9241889RM - EX5500	David	24/03/2025		
DWG NO.			Scale	
JOB NO.			Sheet	
H14880			2 OF 2	